

ò ò Í òĩ

Please change your name in Zoom to include:

- Your pronouns
- Your role in the coalition









1. Stay Engaged
2. Speak your truth responsibly
- 3.

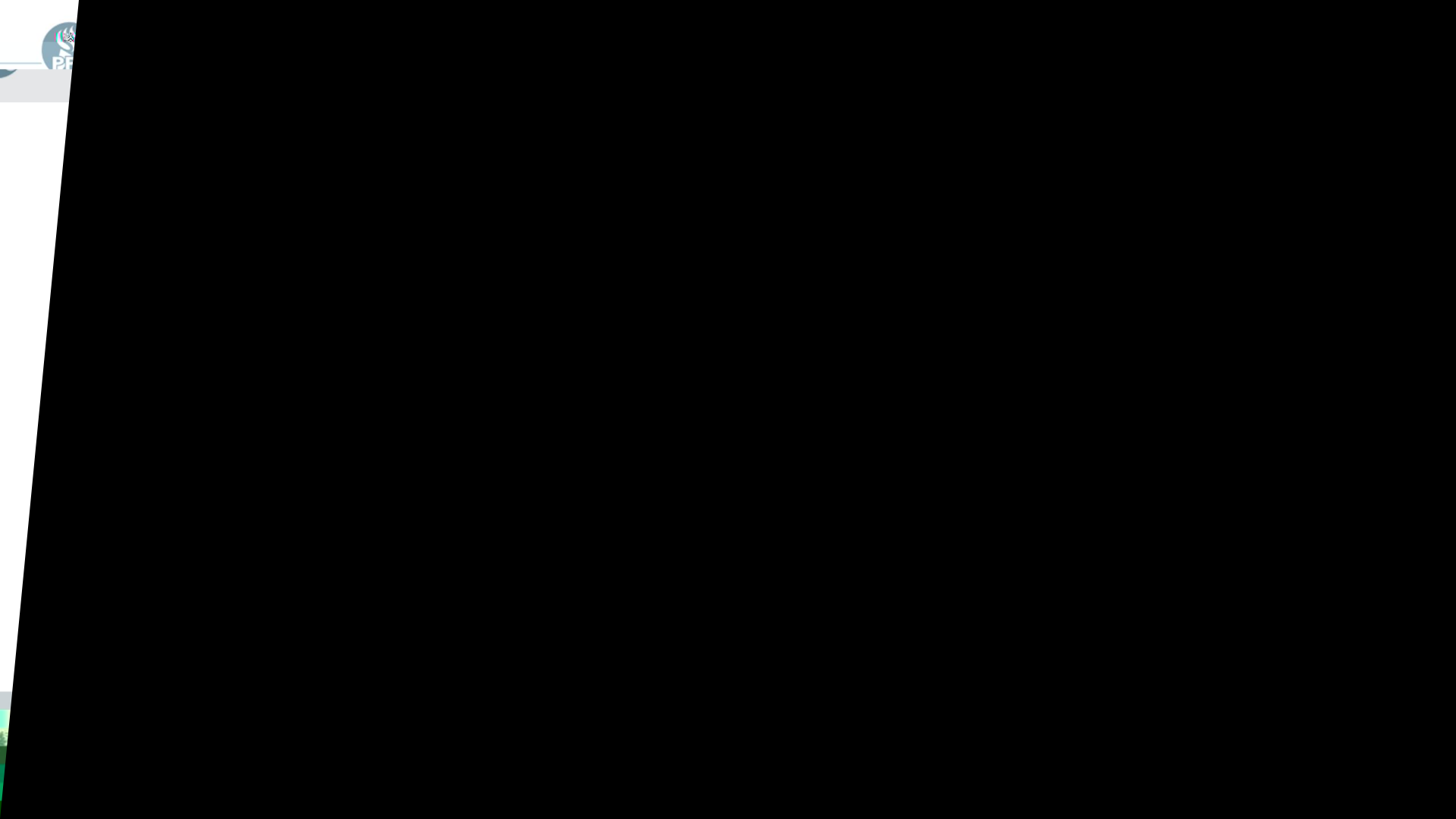


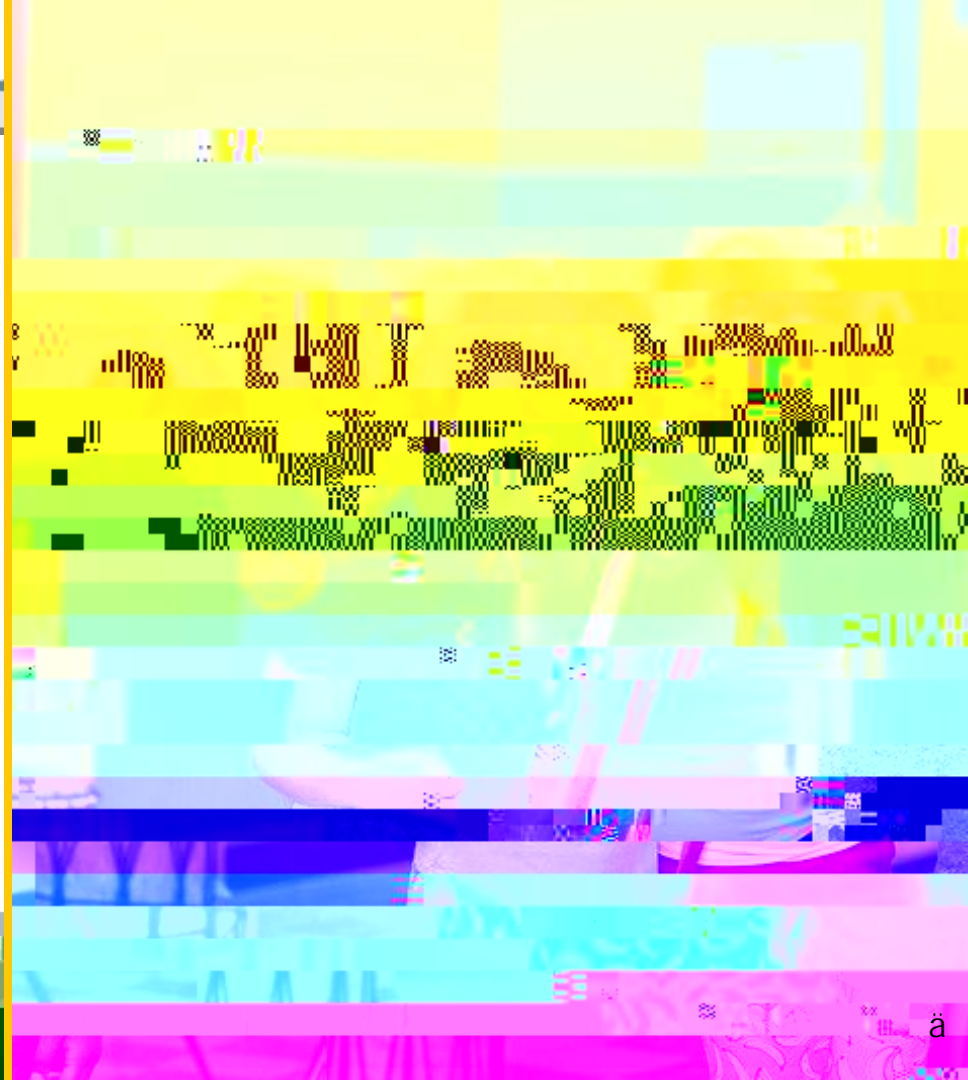
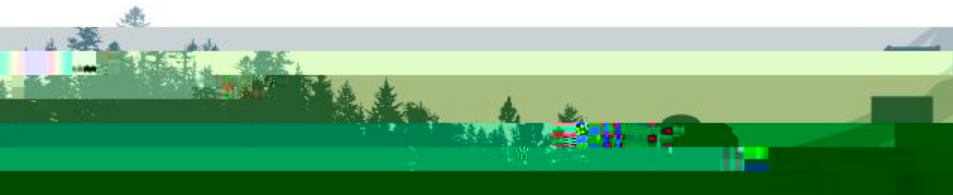


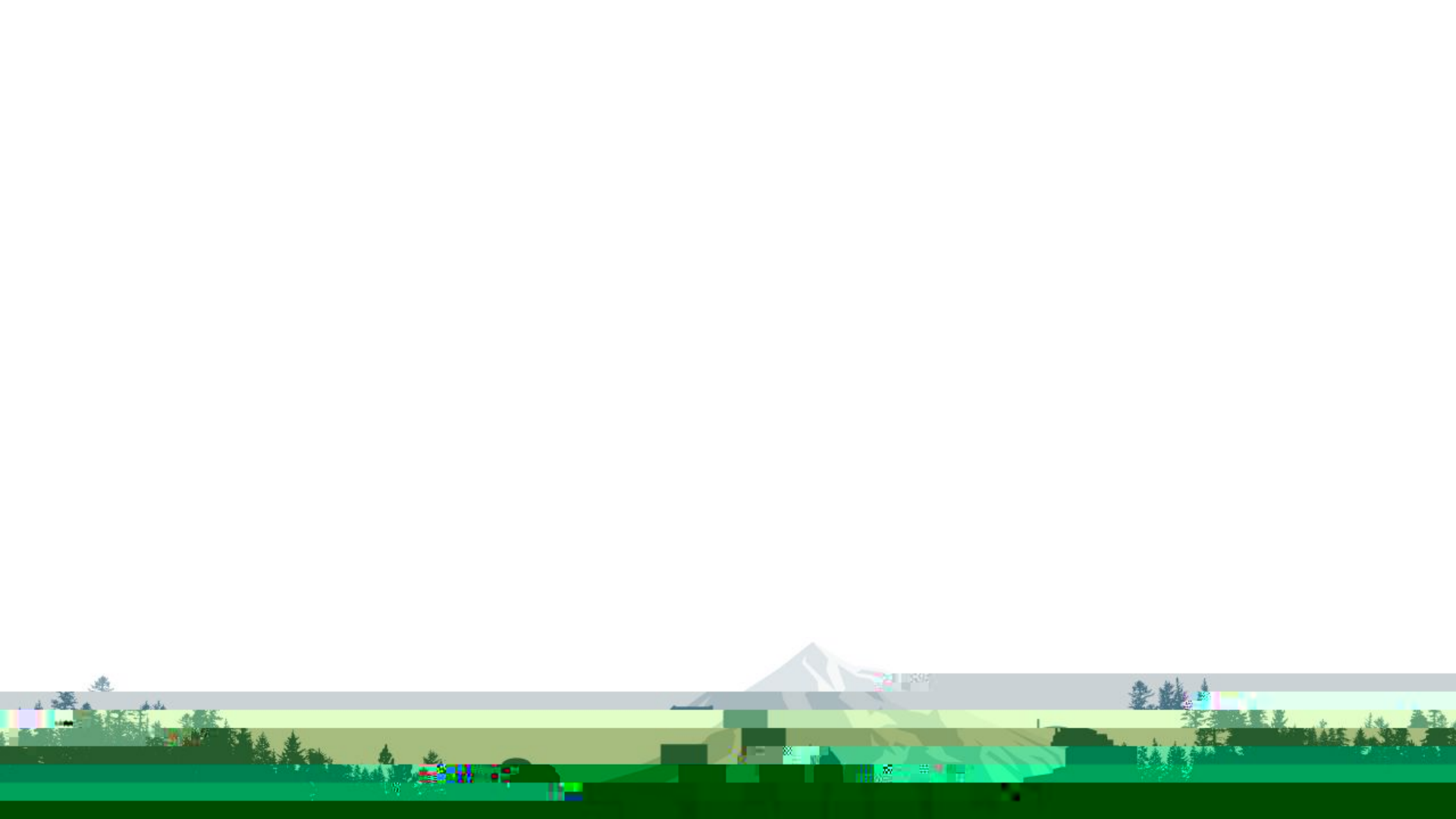
Please note that the public will not be able to listen live to the breakout rooms. However, those sessions will be recorded and will be available on the Enrollment & Program Balancing website the following week.

Por favor tenga en cuenta que el público no podrá escuchar las salas











- How do we merge highly qualitative data with the “numbers exercise” component of scenario development? How do we translate key performance indicators exercises







7 0 1 0 1 1 ç 1 è 1 0 è 0 0 0 è 0 1 è è

i 1 1 0 - è - 0

Greater than 500 students leads to more equitable programming that includes enrichments and core academics

Conversion to middle schools began in 2016 with Ockley Green, 2018 with opening of Harriet Tubman and Roseway Heights

2019 conversions continue and led to re-opening of Kellogg MS this year

Æ 1 0 - 1 0

Convert Harrison Park to a Middle School

Relocate Harrison Park K-5

Add students to Lane MS





a 7 0

Enrollment loss has been greater than expected; unclear how long it will linger
Achieving enrollment targets will require widespread program moves, feeder pattern changes
and boundary line adjustments

Elementary school minimum enrollment target: 270 students

Middle school minimum enrollment target: 500 students

0-7 0 í î è èí ò è î è ò í l í í í î J í

HS leaders are developing a separate plan to address overcrowding

- èí 3cR k ò ç í í ò è òí ò èò

ç í ò è èò î í ò í è è ò î ò è

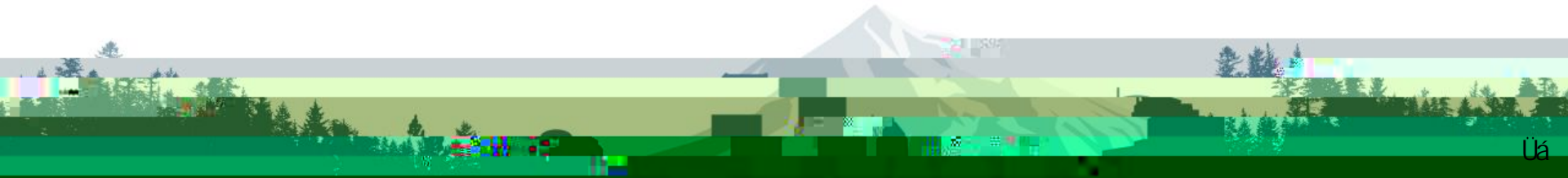






Changes impact 21 schools across SE and into NE

- Community engagement begins the week of November 8
- SEGC will decide on proposal changes, based on community input
- The proposals WILL change, and a final recommendation is due from the SEGC by early January
- The Board will vote on a final plan by early February





1. All PPS message with high-level summary

All PPS message with high-level summary

Share at SEGC meeting

2.

Proposal summaries and links to data dashboards shared through school newsletters, website, social media and other outlets

Proposal summaries and links to data dashboards shared through school newsletters, website, social media and other outlets

3.





Supports community request for a school close to home

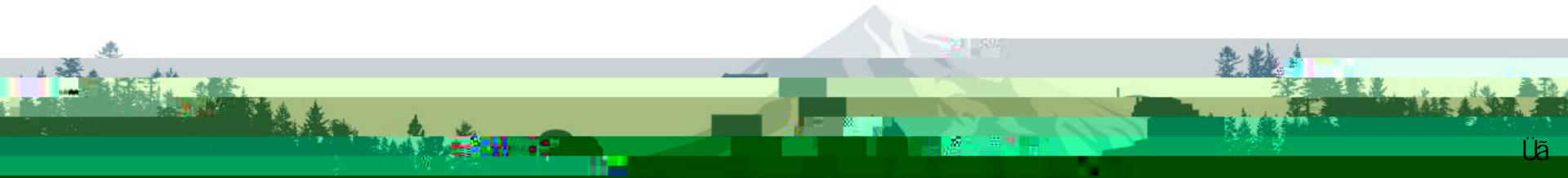
Woodstock in Proposal A, Arleta in Proposal B

Seats for neighborhood students and fewer transfers

Bridger in Proposal A, Woodstock in Proposal B

Lent is the only whole-DLI school in Proposal A

Bridger is a whole-DLI school in Proposal B, along with Lent which grows over time to a









i Rk § c7—









Per board policy, feeder school shifts are usually phased in over multiple years, but the board can accelerate the changes to relieve overcrowding or fill a new school

Per board policy, boundary changes are usually phased in over multiple years, but the board can accelerate the changes to relieve overcrowding or fill a new school

All boundary adjustments shown in Proposals A & B apply to grades K-8
Alternatives can be proposed, including split middle school feeder patterns

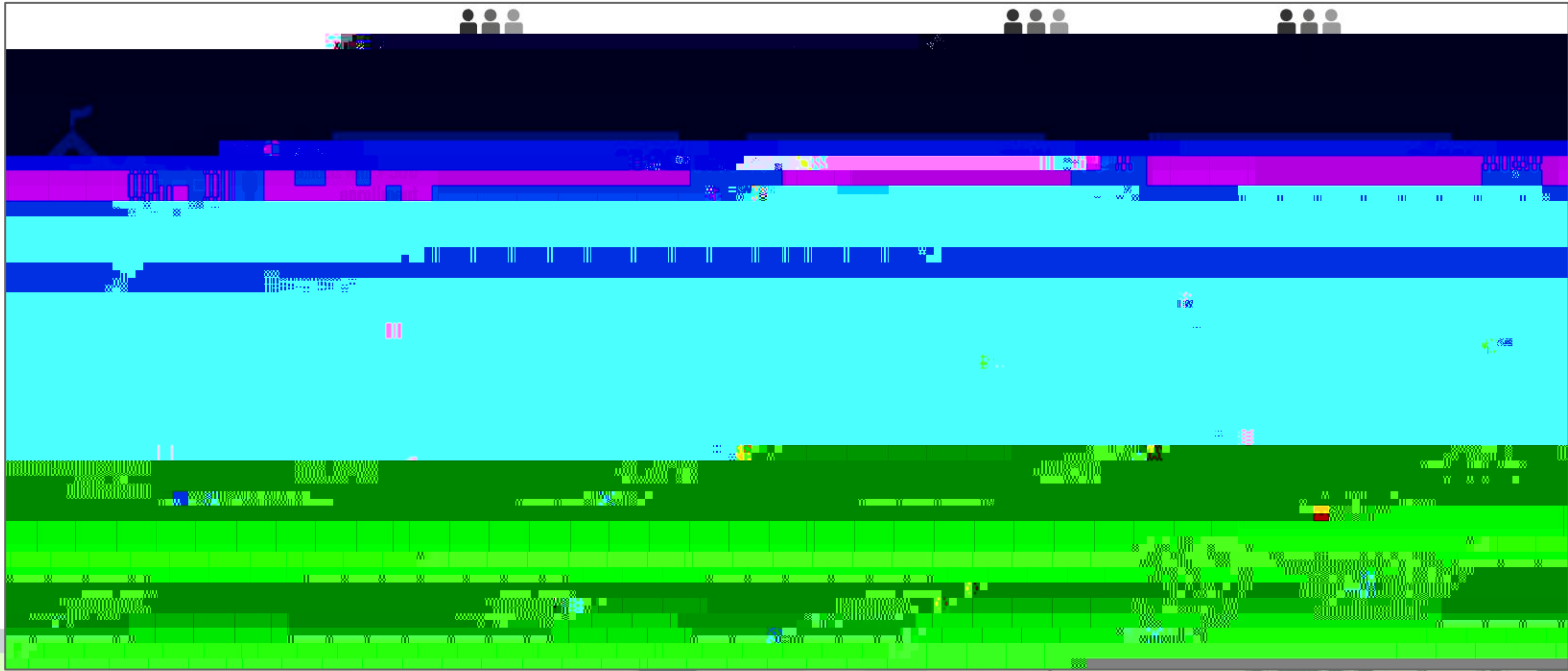
All boundary adjustments shown in Proposals A & B apply to grades K-8
Alternatives can be proposed, including split middle school feeder patterns
Per board policy, boundary changes are usually phased in over multiple years, but the board can accelerate the changes to relieve overcrowding or fill a new school





“ Íè Í ò
Í è
ò Í ò
ç Í ò ò

More demographic impacts are included with each proposal





PxnunyNjIDZ{Njy¹FLO AI Njt{by

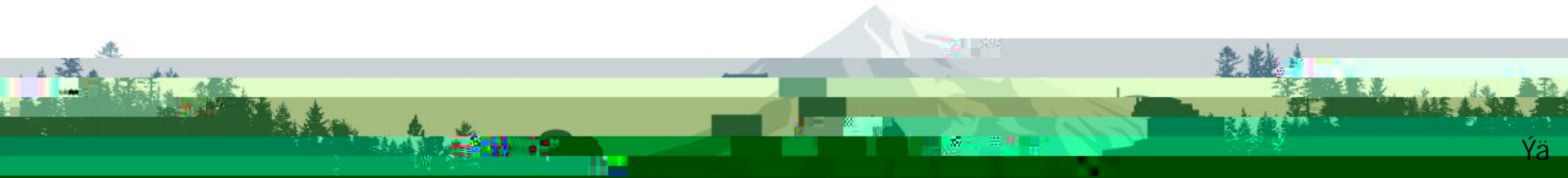


[PxnunyNjIA](#)

[PxnunyNjIB](#)



i Rk § c7—



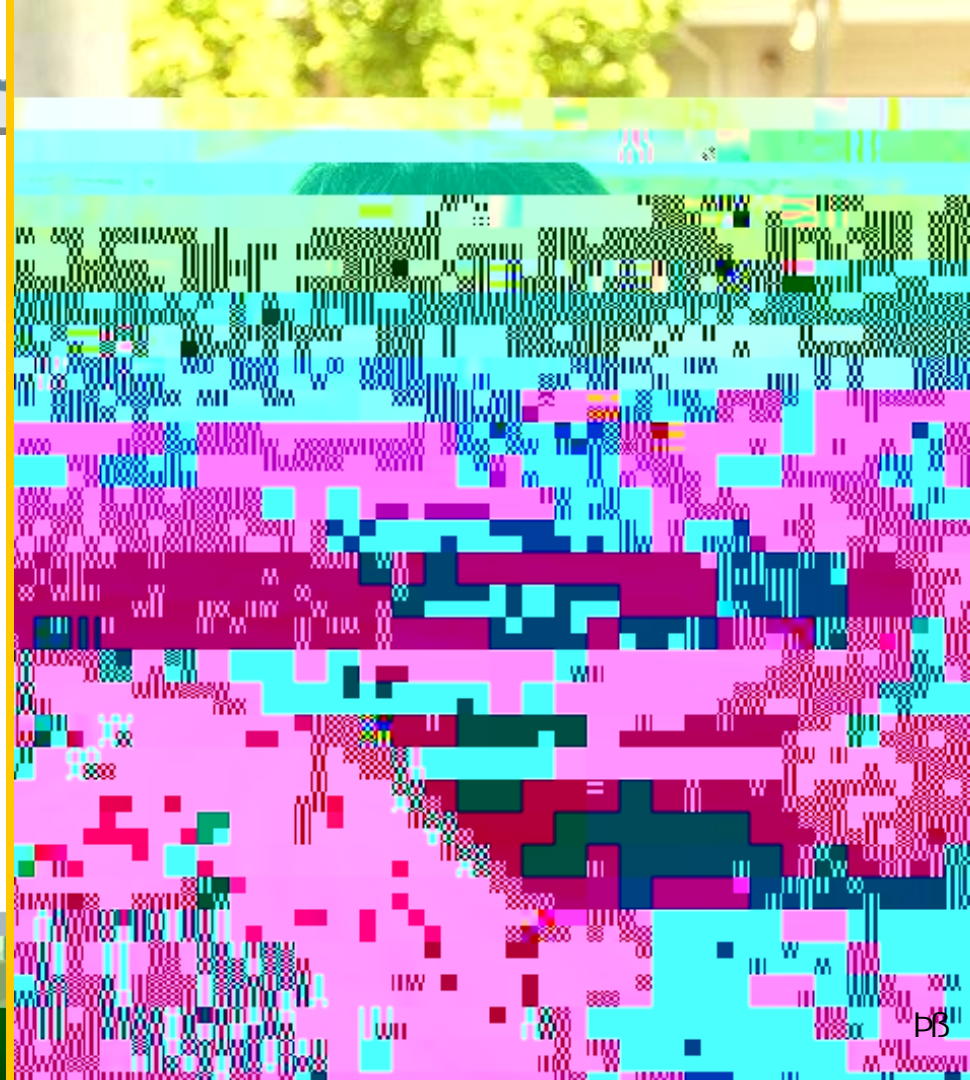
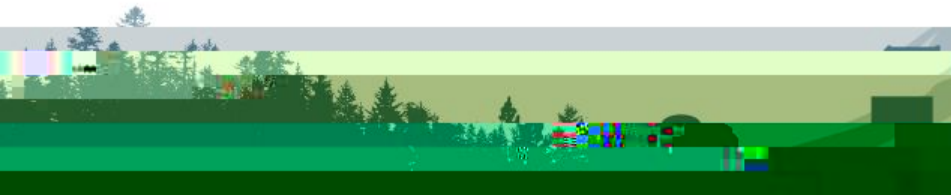






i R S C 7 —







DLI program and CSS relocations will happen all at once at the start of next school year
Neighborhood program relocations will happen all at once at the start of the next school year
Neighborhood programs that will divide between multiple schools may be offered a single location for everyone next year, with boundary changes going into effect for future students only

Per Board policy, boundary changes, including feeder pattern changes, are phased-in over time. The Board can decide to accelerate the rate of change.

The Board can also decide whether to waive rights to transfer based on sibling preference and other hardships to accelerate the pace of changes.

